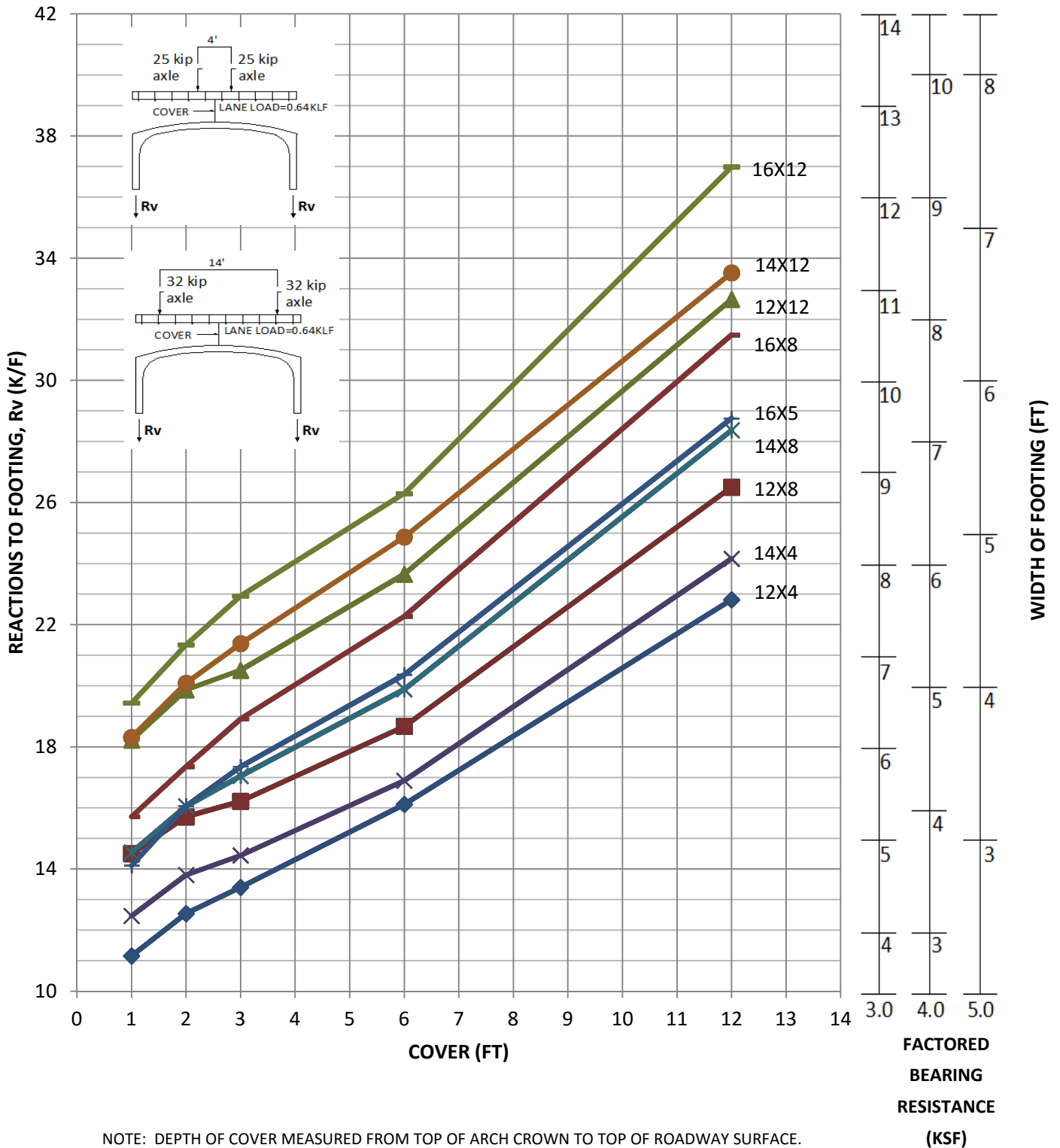
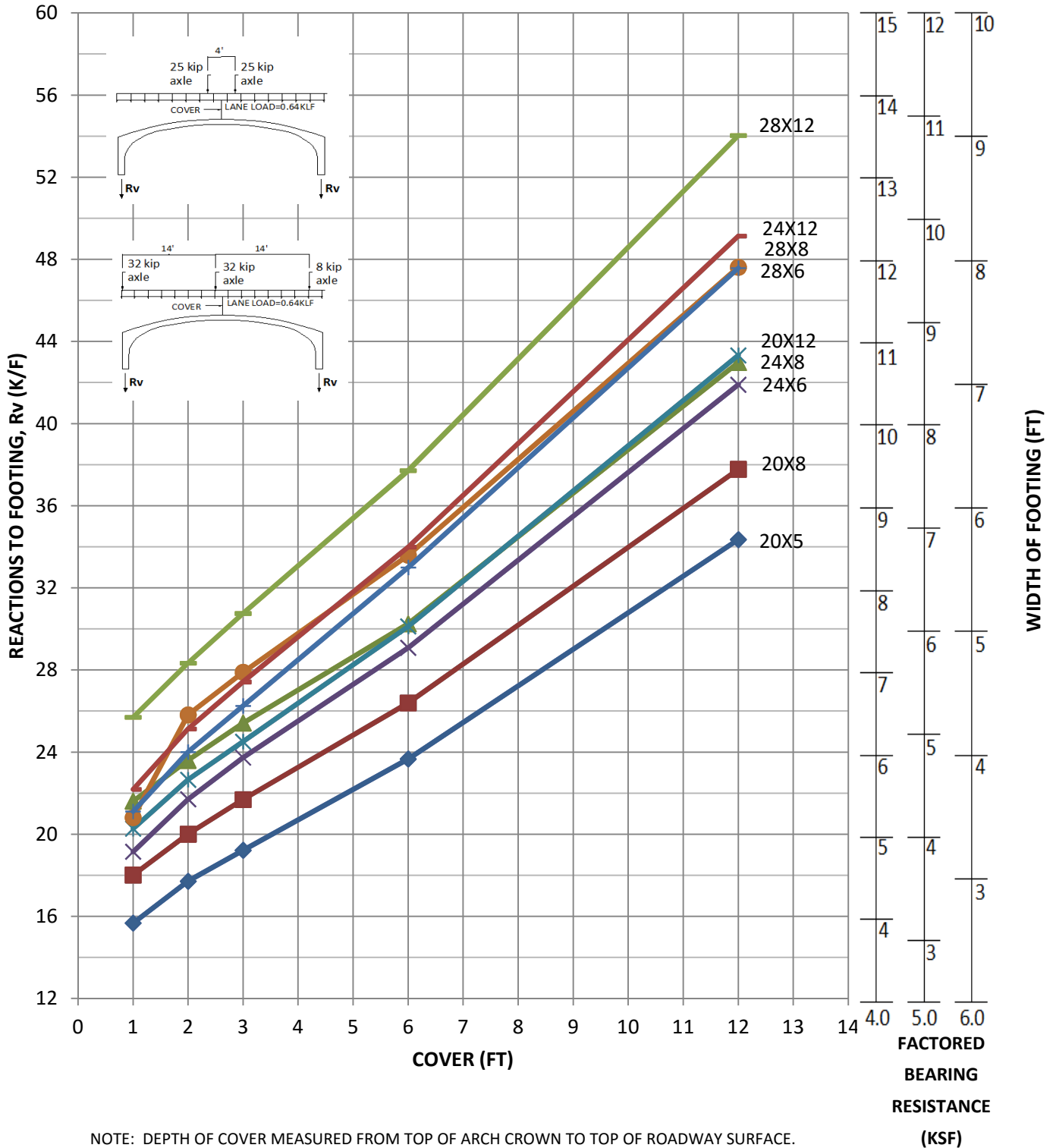


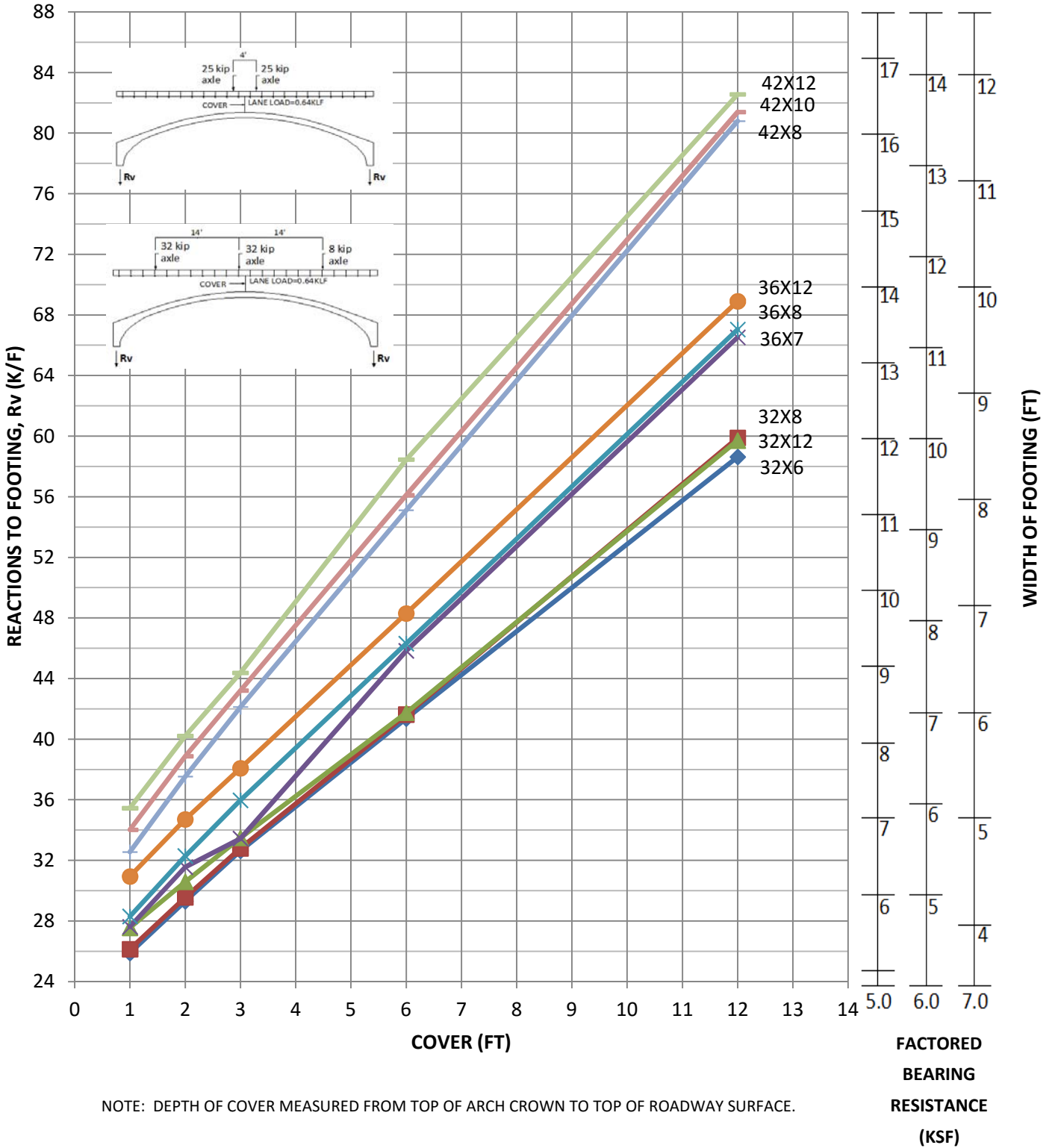
VERTICAL FOOTING REACTIONS
12', 14', & 16' SPANS
FACTORED LOADS
HL-93



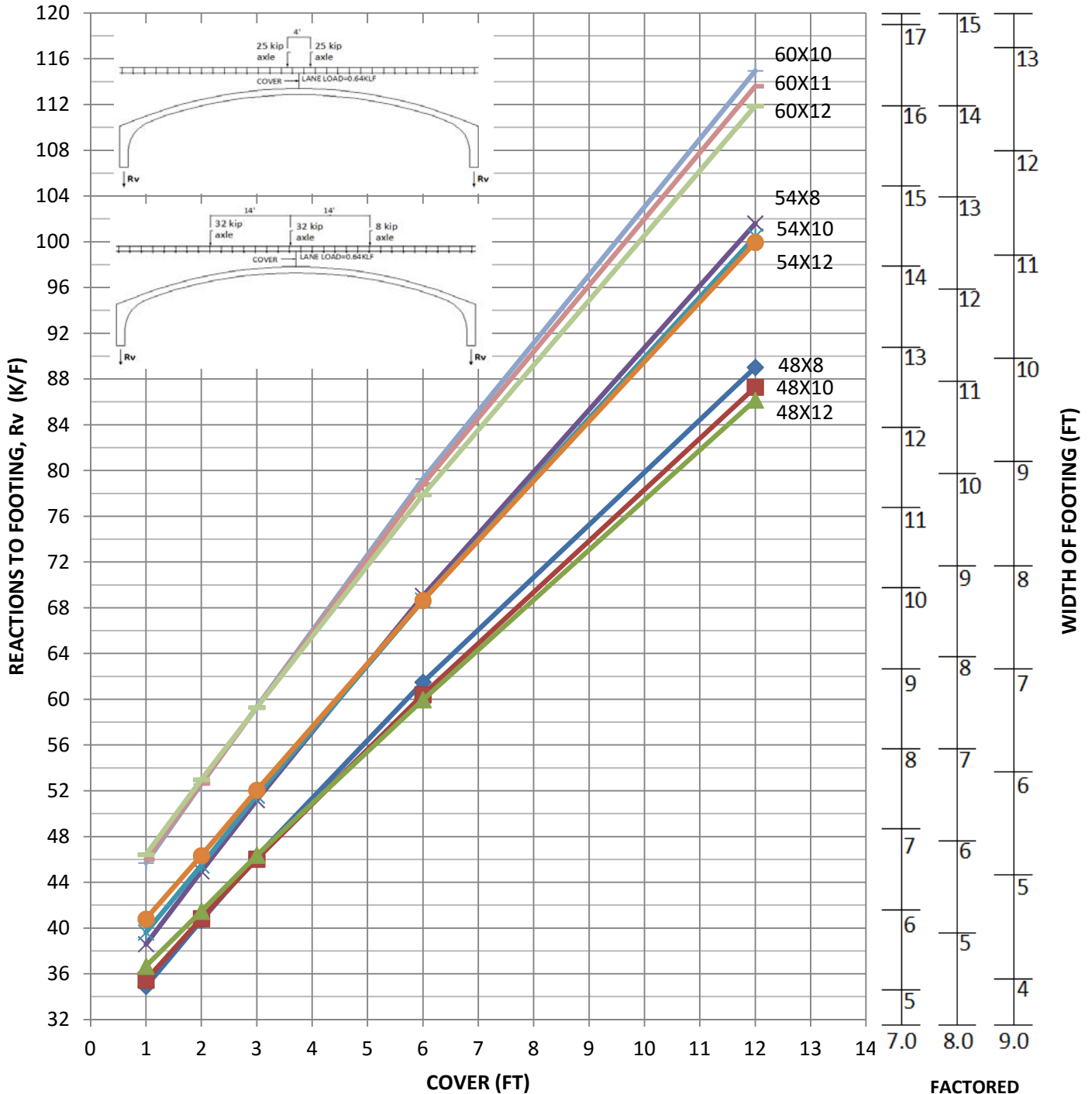
VERTICAL FOOTING REACTIONS
20', 24' & 28' SPANS
FACTORED LOADS
HL-93



VERTICAL FOOTING REACTIONS
32', 36', & 42' SPANS
FACTORED LOADS
HL-93



VERTICAL FOOTING REACTIONS
48', 54', & 60' SPANS
FACTORED LOADS
HL-93

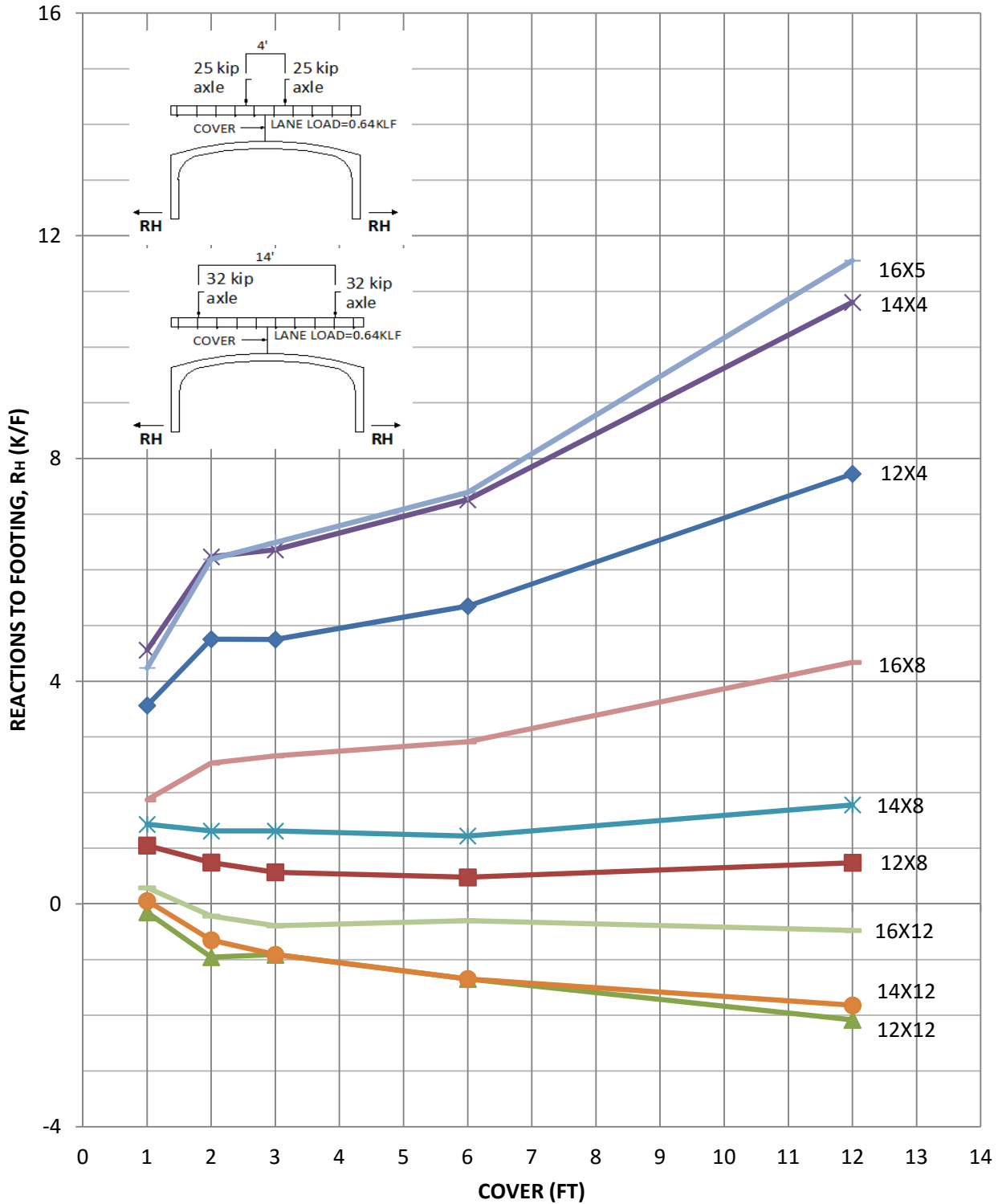


NOTE: DEPTH OF COVER MEASURED FROM TOP OF ARCH CROWN TO TOP OF ROADWAY SURFACE.

FACTORED
 BEARING
 RESISTANCE
 (KSF)

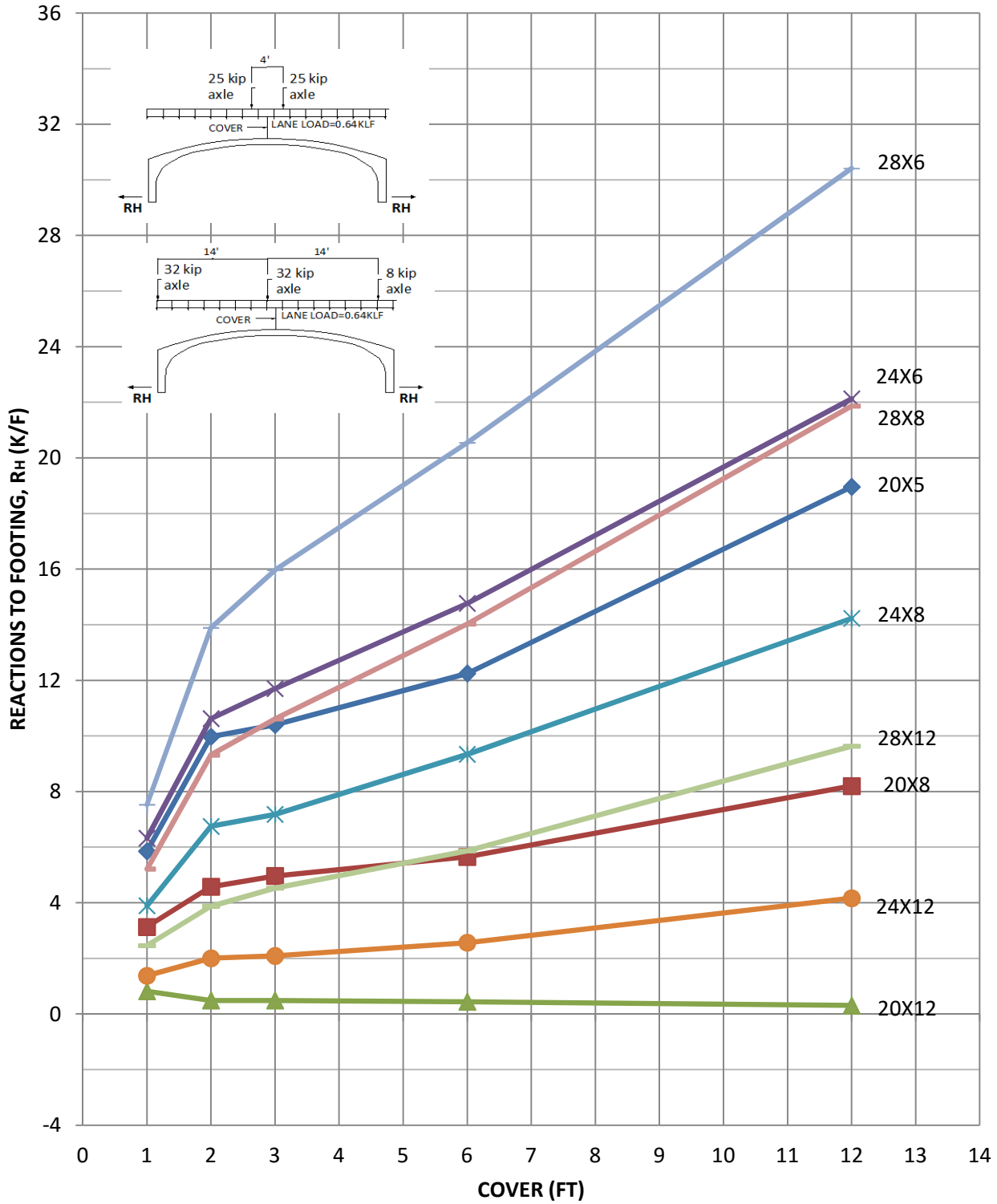


HORIZONTAL FOOTING REACTIONS
12', 14', & 16' SPANS
FACTORED LOADS
HL-93



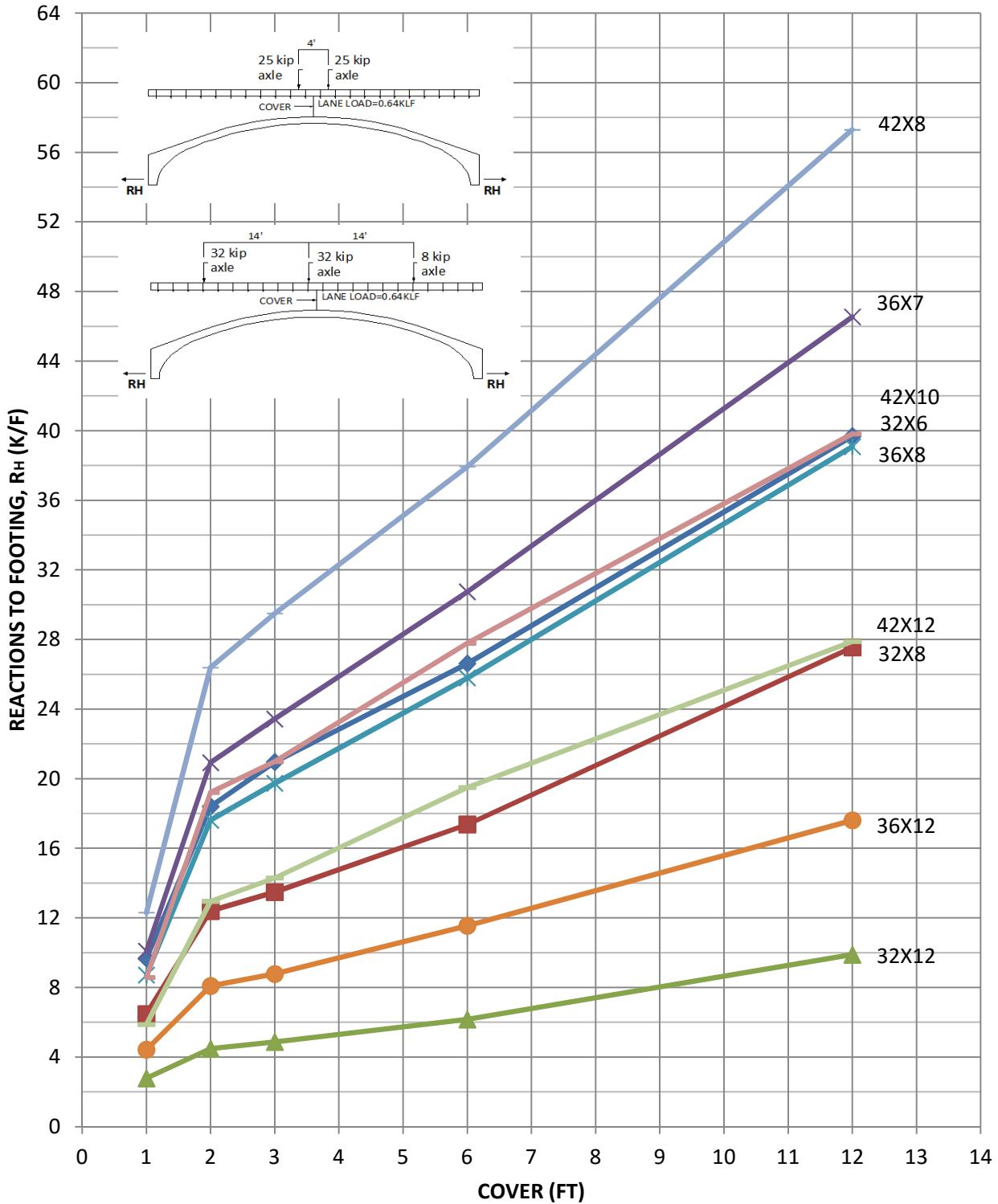
NOTE: DEPTH OF COVER MEASURED FROM TOP OF ARCH CROWN TO TOP OF ROADWAY SURFACE.

HORIZONTAL FOOTING REACTIONS
20', 24', & 28' SPANS
FACTORED LOADS
HL-93



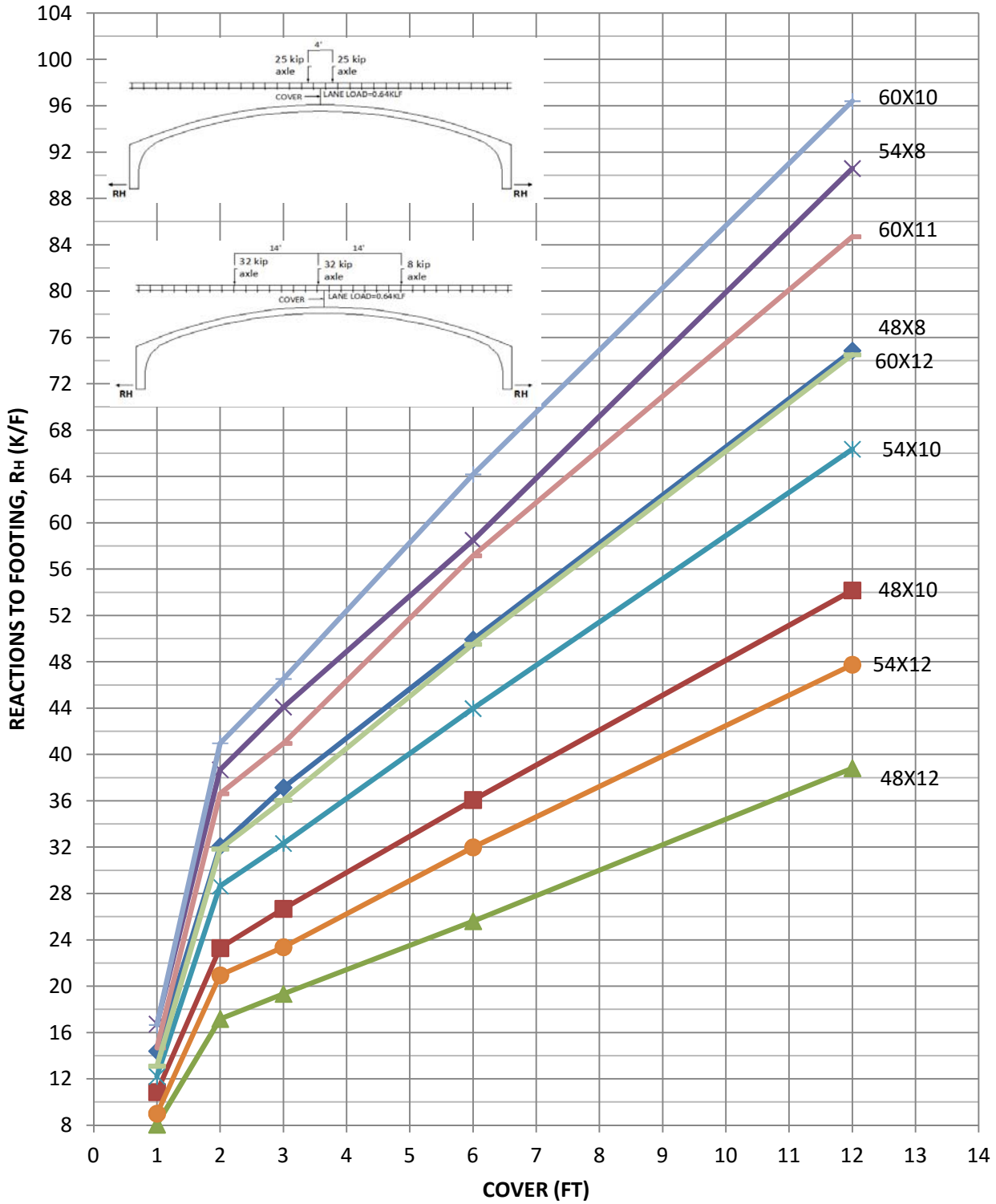
NOTE: DEPTH OF COVER MEASURED FROM TOP OF ARCH CROWN TO TOP OF ROADWAY SURFACE.

HORIZONTAL FOOTING REACTIONS
32', 36', & 42' SPANS
FACTORED LOADS
HL-93



NOTE: DEPTH OF COVER MEASURED FROM TOP OF ARCH CROWN TO TOP OF ROADWAY SURFACE.

HORIZONTAL FOOTING REACTIONS
48', 54', & 60' SPANS
FACTORED LOADS
HL-93



NOTE: DEPTH OF COVER MEASURED FROM TOP OF ARCH CROWN TO TOP OF ROADWAY SURFACE.

